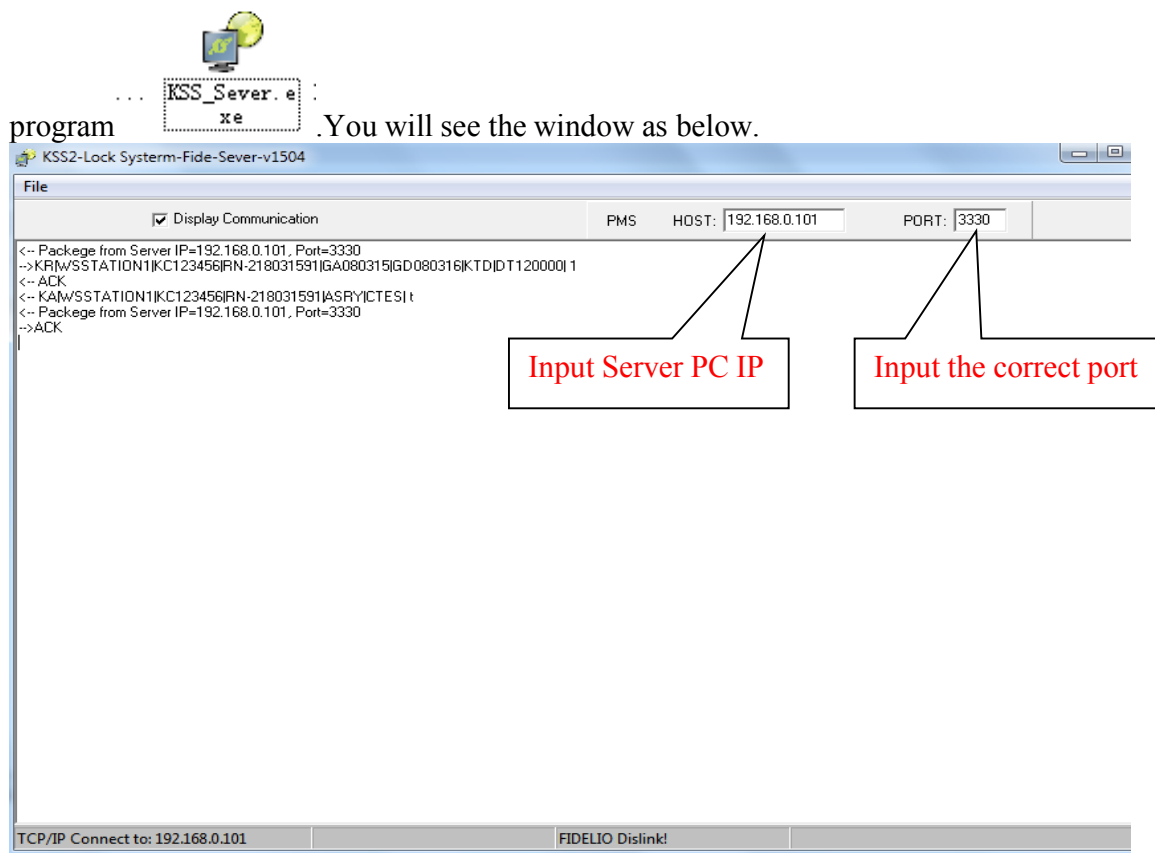


Fidelio Setting

Please follow the steps below to do the Fidelio interface connection.

Step 1. Test the communication between Opera and Lock Server.

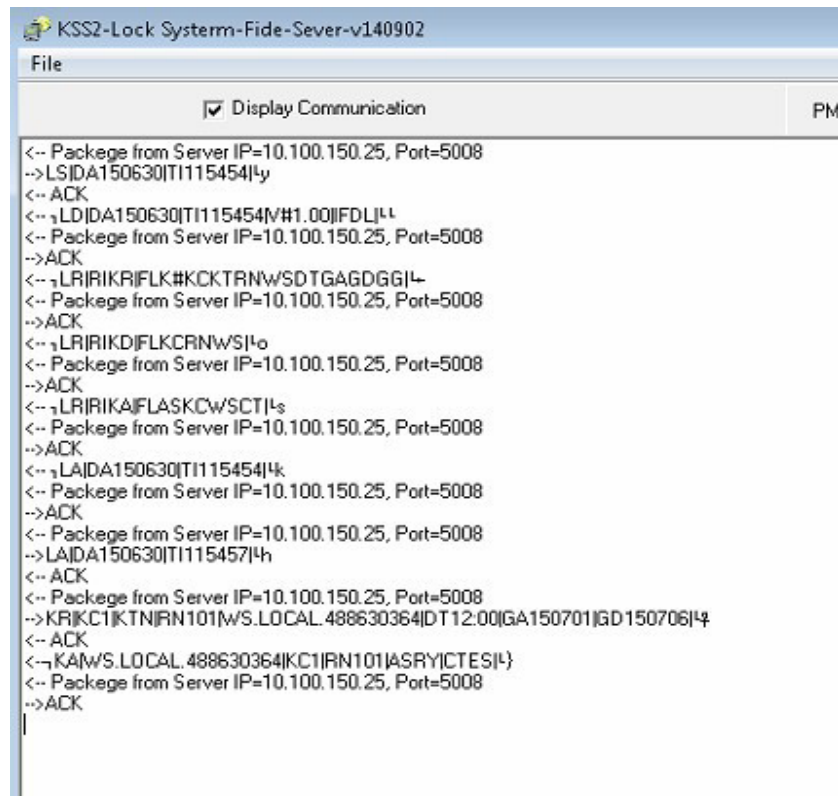
Copy the document “Fidelio_Lock_Server” to any place of the [Lock Server](#) PC. Run the



You should make sure the IFC Type on your Opera is correct.

Resort	Interface Name	IFC Type	Status
CYNN	KSS I/F - KEYU CARD LOCK /	DLS	RUNNING

Run your Opera system for interface to server. Send LS to Lock Sever from Opera



The screenshot shows a software window titled "KSS2-Lock System-Fide-Sever-v140902". It has a menu bar with "File" and a toolbar with a checked "Display Communication" button and a "PM" button. The main area displays a log of network communication between a client and a server at IP 10.100.150.25, port 5008. The log shows a series of data packets being received from the server and acknowledged by the client.

```

<- Package from Server IP=10.100.150.25, Port=5008
-->LSIDA150630ITI115454I4y
<- ACK
<- LDIDA150630ITI115454IV#1.00IFDLJ44
<- Package from Server IP=10.100.150.25, Port=5008
-->ACK
<- LRIRIKRIFLK#KCKTRNWSOTGAGDGGI44
<- Package from Server IP=10.100.150.25, Port=5008
-->ACK
<- LRIRIKDIFLKCRNWSI4o
<- Package from Server IP=10.100.150.25, Port=5008
-->ACK
<- LRIRIKAIFLASKCWSTI4s
<- Package from Server IP=10.100.150.25, Port=5008
-->ACK
<- LAIDA150630ITI115454I4k
<- Package from Server IP=10.100.150.25, Port=5008
-->ACK
<- Package from Server IP=10.100.150.25, Port=5008
-->LAIDA150630ITI115457I4h
<- ACK
<- Package from Server IP=10.100.150.25, Port=5008
-->KRJKCTIKTNIRN101IWS.LOCAL.488630364IDT12:00IGA150701IGD150706I44
<- ACK
<- KAMWS.LOCAL.488630364IKCTIRN101IASRYICTESI44
<- Package from Server IP=10.100.150.25, Port=5008
-->ACK

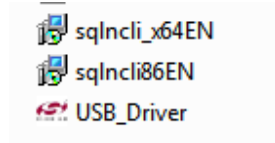
```

If you can receive LD,LA,LR..... in server,it means the Opera link the sever successfully. Otherwise it can't set Opera protocol STD for start, and LRC for the end.Please check and make sure the IP and port is correct.

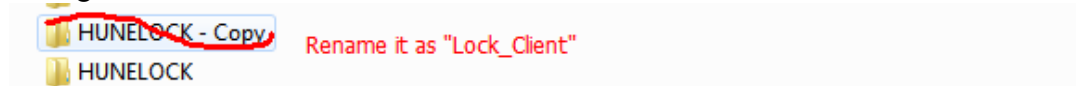
Step 2. Set the Lock Client

1. Install the Hune lock software(SQL version) in Client PC.And make sure the Hune lock software can work well with SQL Sever Database on client's PC.

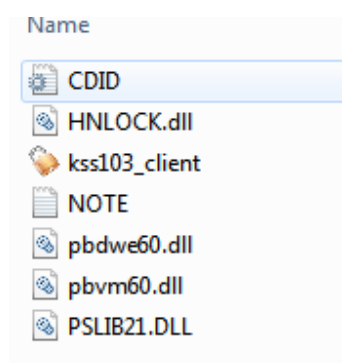
2.Install the Sqlncli_x64EN (SQL for 64bit system) or Sqlncli_x86EN (SQL for 32bit system) and USB driver on client PC.



3.Make a copy of the lock software. And rename it as “Lock_Client” for easy management.



4.Copy all the files from folder “Lock Client RF/MF” to folder “Lock_Client” and replace the old files.



4.Editing the Database part of CDID.ini

[DATABASE]
 SERVERNAME=KY369\SQLEXPRESS
 DATABASE=HDATA
 LOGID=SA
 LOGPASS=sa
 DB=1

[HOST]
 HOST=192.168.0.101
 PORT=3330
 COM=3

[REGDATA]
 REG=Y

[TTSS]
 TRANSLATE=0

Note:

1. Data are for reference only
2. Don't edit other parts we have no mention in this file.

SERVERNAME=KY9 (the Server computer name, KY9 just example)

LOGID=SA (the user to login the SQL Server, SA just example)

LOGPASS= (the password to login the SQL Server, vacant just example)



kss103_client.exe

5. Run the program (make sure the encoder is connected), you will see Lock Client window as below.

KSS3-HUNE Intelligent lock system-TCP/IP-Client-v20-Link150821

Lock System Server

HOST 192.168.0.185 Connect Disconnect

Encoder COM 3 Link Encoder

Link Sever successfully! 2015/08/25 11:19:07

Input the Lock Sever IP

Input the Lock Server's IP, Click "Connect".

If it shows "Link Server successfully" as above, It means the Lock Client can Link the Lock Server successfully. Otherwise, please check and make sure the Lock Server's IP input is correct.

Note: "Link Encoder" is for checking the Lock Client whether link the encoder successfully.

Step 3:Setting the Lock Server config :

Run Lock Sever Configure file “KSSInfo.ini”, we can see the window as below.(Before you editing this config file, you should close the Server program first.)

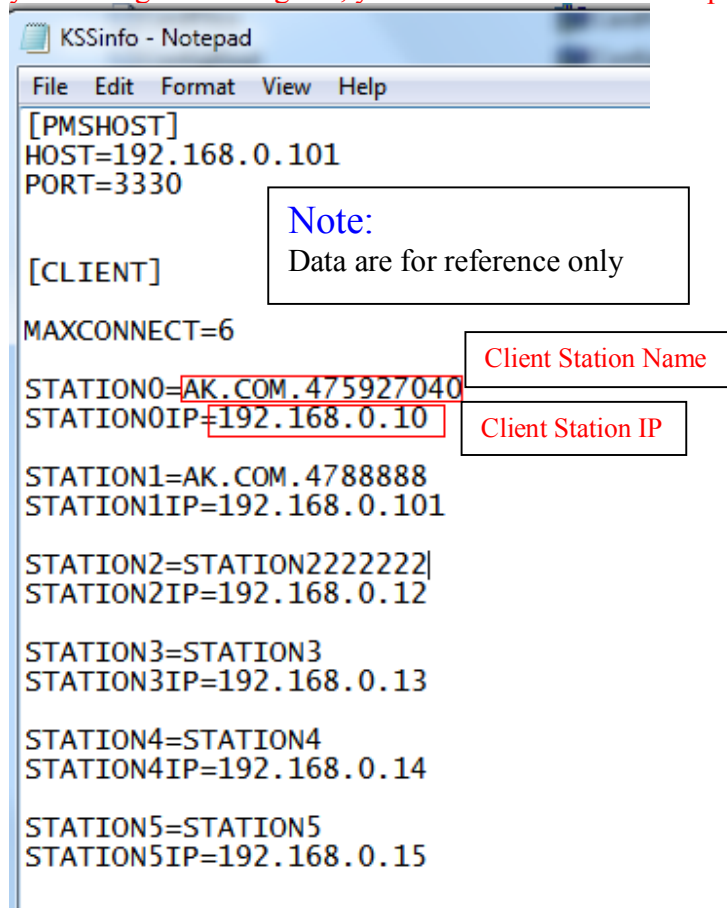


Chart KSSInfo.ini of Lock Sever

1. You can set the max number of clients in MAXCONNECT.
For example:when you set 6 as the picture,the Fidelio can support 6 clients(STATION0-5) to issues the card at the same time .

2.You should input your client's Station Name and Station IP.

If you don't know the Station Name,you can find it as below

Link the Opera, server and Client Program,send an issues command from Opera,you will receive the information in server as below:

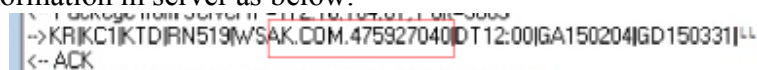


Chart Lock Sever receive Command from the Opera

As seen above, the text behind the “WS” is STATION NAME(“AK.COM.475927040” is the station name in the picture). Behind the “RN” is the ROOM NAME.(519 is the room name in the picture)

Note:

1. After you editing the Station Name and IP,please check and make sure it is accurate.
2. Before editing the Kssinfo.ini, You should close the Lock Sever first, and run it again after finish editing for updating the Kssinfo.ini information.
3. Please check and make sure the room name in the Opera system should be same as the room name in Hune lock software

Step4: Issues the guest card for testing.

Run the Opera system, lock server and Lock Client for testing. try to issue the guest card from the Opera (Please make sure the room name in your PMS system and the room name in the lock software are exact the same)

If it can issues the key card and unlock the door successfully, it means the interface complete.

NOTE:

If you want to create more client, please follow below step to clone after a successful test above.

1. Copy the folder “Lock_Client” to every client PC.
2. Install the Sqlncli_x64EN (SQL for 64bit system) or Sqlncli_x86EN (SQL for 32bit system) on every client PC.
3. Install USB driver on every client PC.